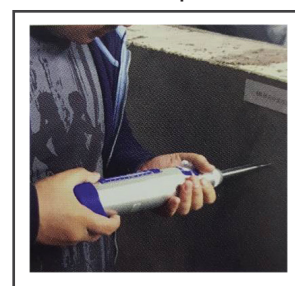




CL 4021 X / 005-A001

Soft Silicone End Cap
for comfort operation.

CONCRETE TEST HAMMER (HIGH STRENGTH)

Concrete Strength Evaluation

Used to determine the compressive strength of concrete. Fully aluminium casing, high quality internal mechanism, extra durability up to 300,000 test cycle and with additional soft silicone cap for comfortable usage.

Technical Specifications :

Model Number	CL 4021 X / 005
Impact Energy	4.5 Nm (4.5 Joule)
Rebound Direction	90° Horizontal
Measurement Range	20 to 110 N/mm ²
Casing Dimension (mm)	442 (L) x 210 (W) x 106 (H)
Approx. Weight	3.5 kg

Unit Consists Of :

Model Number	Parts Description	Qty
CL 4021 X / 005 – P 001	Concrete Hammer	1no.
CL 4021 X / 001 – P 002	Grinding Stone	1no.

*1 Copy of Manual Instruction

Optional Accessories :

Model Number	Accessories Description
CL 4021 X / 005 – A 001	Concrete Hammer Anvil