

# SLAKE DURABILITY APPARATUS

Standard: ASTM D4644

## Slake Durability Index

This apparatus provides a means of predicting the durability of rock to weakening and disintegration when subjected to the simulated effects of climatic slaking. The apparatus consists of a motorized drive unit which is mounted on a base plate and which can rotate two or four drum at the same time with a 20 r.p.m. of speed.

### Technical Specifications :

Model Number	CL 1021 X / 001
Dimension (mm)	1400 (L) x 370 (W) x 240 (H)
Speed Rotation	20 r.p.m.
Approx. Weight	21 kg
Power Supply	220 - 240 V, 1 ph, 50 / 60 Hz

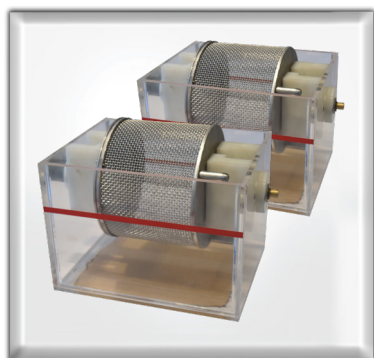
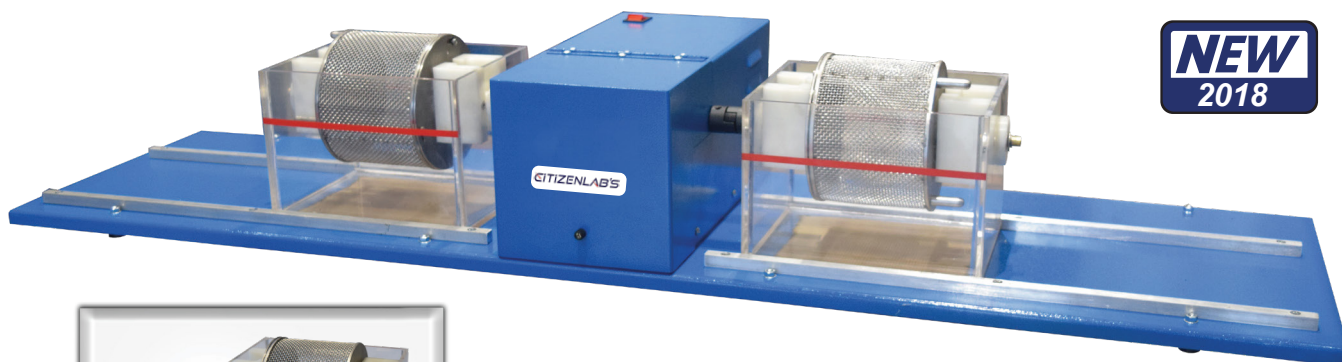
### Unit Consists Of :

Model Number	Parts Description	Qty
CL 1021 X / 001 – P 001	Drum & Tank Assemblies	2 Units
	Included Coupling	

\*1 Copy of Manual Instruction

### Optional Accessories :

Model Number	Accessories Description
CL 1021 X / 001 – A 001	Drum Assembly Unit c/w Cover
CL 1021 X / 001 – A 002	Tank Assembly Unit
CL 1021 X / 001 – A 003	Flexible Coupling Unit



CL 1021 X / 001 – P 001